

NEWQUEST

CAPITAL

CREATING VALUE THROUGH DISCOVERY

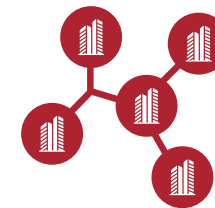


An entrepreneurial, discovery-driven investment group that incubates and finances early-stage mineral exploration projects globally.

NEWQUEST
CAPITAL



Our team utilizes cutting edge geoscience to generate large-scale exploration targets with potential for Tier-one discovery and massive financial reward.



We have a portfolio of companies operating in mining-friendly jurisdictions, two of which have multi-year exploration agreements with Newmont and AngloGold Ashanti.



We make investments in select, undervalued exploration companies with quality management.

LEADERSHIP TEAM



Alistair Waddell
BSc (Hons.), MAusIMM

Geologist with over 27 years of experience.

President & CEO of Inflection Resources and Co-Founder & Chairman of Headwater Gold.

Previously VP Greenfields Exploration for Kinross & CEO of GoldQuest Mining.



Wendell Zerb
BSc, P. Geol

Geologist with over 30 years of experience in capital markets, mining and mineral exploration/development.

Currently Chairman & CEO of Red Canyon Resources. Chairman Inflection Resources.

Previous senior roles with Canaccord & PI Financial. Former President & CEO of Exeter Resource Corp.



Caleb Stroup
BSc & MSc - Geology

Geologist with over 15 years of experience.

President, CEO & Co-Founder of Headwater Gold.

Former Senior Geologist for Kinross Gold and previously with NovaGold and Tintina Resources.



Tero Kosonen
MSc - Economics

Co-Founder of a private equity/venture capital group.

Chairman for FinEx Metals & Director for Headwater Gold and Inflection Resources.

25 years of experience in management roles, entrepreneurial ventures & investments in natural resources.



Sandra Wong
CPA, CGA

Over 25 years of experience in the mining sector. Extensive experience in accounting, corporate secretarial & administrative services.



Brennan Zerb
BBA

Sales, investor relations and marketing background. Experience working with junior mining companies. Currently heading up IR for Headwater Gold, Inflection Resources and Red Canyon Resources.



Dr. Greg Dering
PhD - Geology

Geologist with exploration in the western US and Alaska. Previous experience with Barrick and Nevada Bureau of Mines.

“At NewQuest Capital we believe that there are large-scale undiscovered and underexplored greenfield opportunities globally with significant potential for major discoveries.”



Our Guiding Principles:

✓ **Early-stage greenfields exploration in mining-friendly jurisdictions**

✓ **Technically driven team utilizing innovative geoscience**

✓ **Focused on discovery of Tier-1 scale deposits**

✓ **100% owned district scale land positions**

✓ **Global focus with strong local presence**

✓ **Partnerships with major mining companies**

✓ **Disciplined Capital Management**



GLOBAL ALLIANCE OF EXPLORATION COMPANIES

CONDUIT
NICKEL



ConduitNickel.com

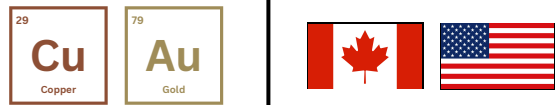
FINEX
METALS



FinExMetals.net

REDCANYON
RESOURCES

CSE: REDC | OTCQB: REDRF



RedCanyonResources.com

HEADWATER
GOLD INC.

CSE: HWG | OTCQB: HWAUF



HeadwaterGold.com

Earn-in agreements with Newmont

INFLECTION
RESOURCES

CSE: AUCU | OTCQB: AUCUF | FSE: 5VJ



InflectionResources.com

Earn-in agreement with AngloGold Ashanti

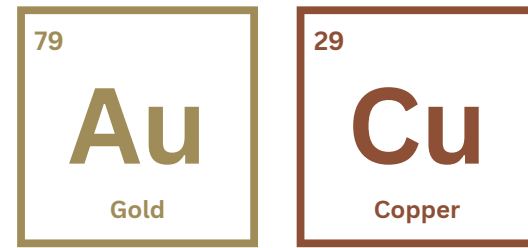
NEWQUEST
CAPITAL

WWW.NQCAPITALGROUP.COM

CLEARVIEW
GOLD



SUCCESSFUL EXIT:
May 2023



EXPLORING FOR WORLD-CLASS COPPER-GOLD DEPOSITS IN AUSTRALIA

KEY PEOPLE:

Wendell Zerb - Chairman

Alistair Waddell - President, CEO & Director

Doug Menzies - VP Exploration

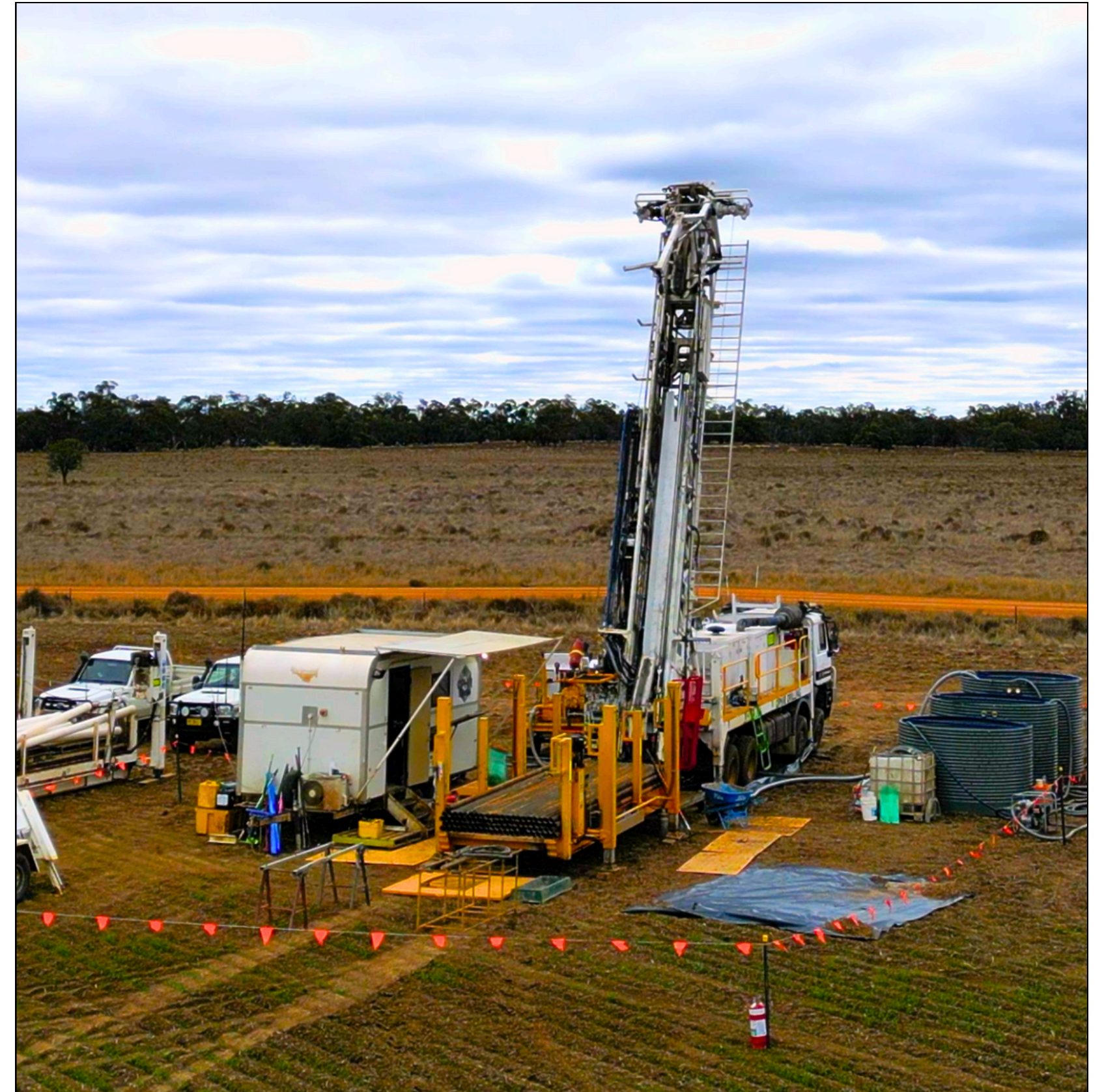
Fraser MacCorquodale - Director

Dr. Stuart Smith - Director

Dr. Neil Adshead - Advisor

Dr. Douglas Haynes - Technical Advisor

Dr. Alan Wilson - Technical Advisor



Duck Creek Project, New South Wales



EXPLORING FOR GIANT COPPER-GOLD DEPOSITS

Drilling large, undercover porphyry copper-gold targets in the northern, covered extension of Macquarie Arc

100% PROJECT OWNERSHIP

District-scale land position (>7,000 km²) in New South Wales

ANGLOGOLD ASHANTI EXPLORATION AGREEMENT

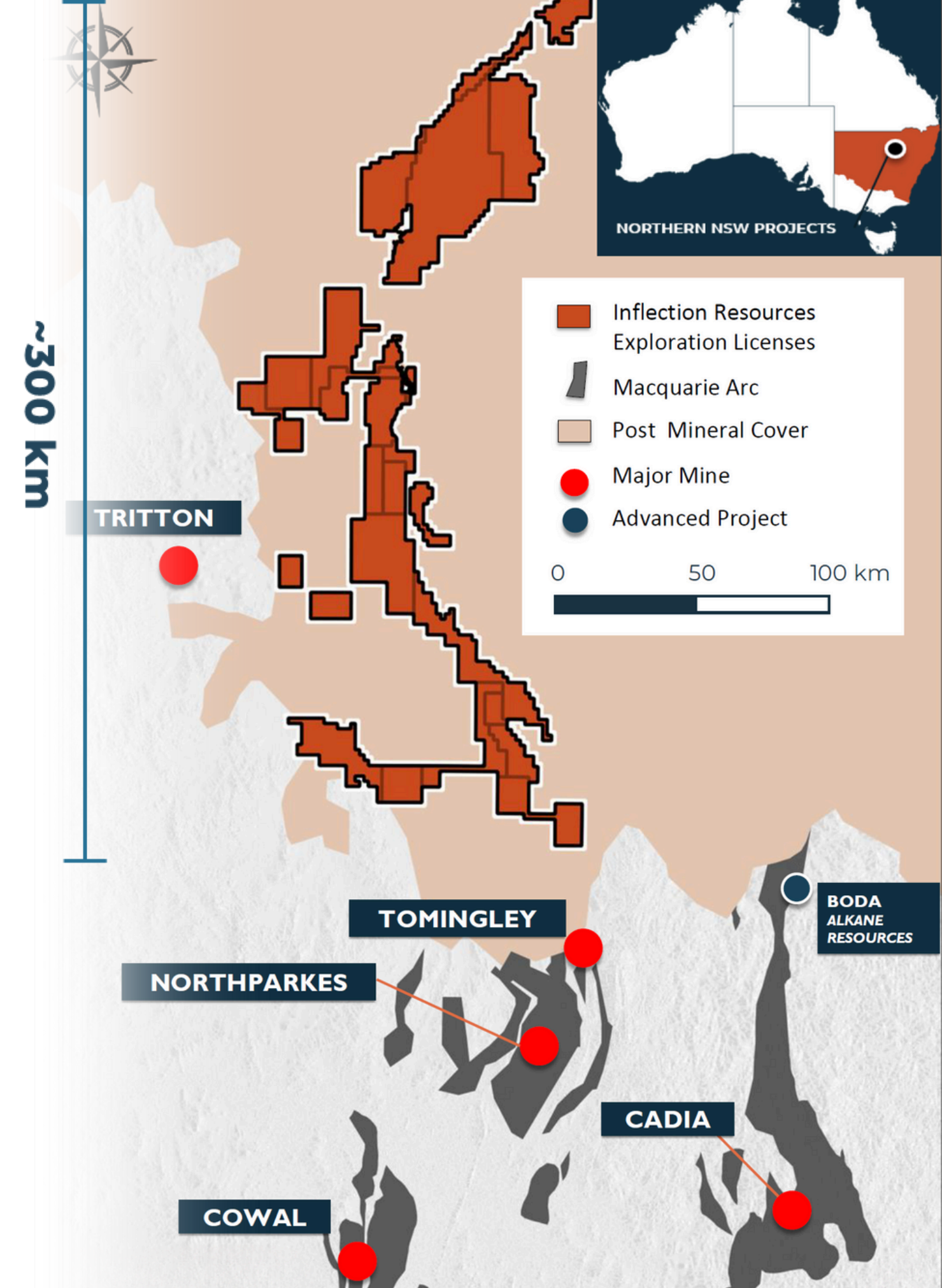
Multi-year exploration alliance to explore for Tier-I scale copper & gold deposits

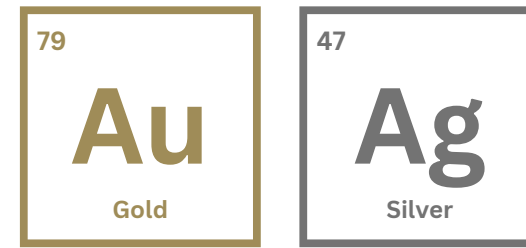
INNOVATIVE EXPLORATION STRATEGY

Exploring large, previously un-drilled targets undercover

PREMIER MINING JURISDICTION

Exploring mining-friendly New South Wales, Australia





EXPLORING FOR HIGH-GRADE GOLD IN THE WESTERN USA

KEY PEOPLE:

Alistair Waddell - Chairman

Caleb Stroup - President & CEO

Randy Vance - Chief Geologist

Dr. Greg Dering - VP Exploration

Sandra Wong - CFO

Fraser MacCorquodale - Director

Graeme Currie - Director

Brent Cook - Technical Advisor



Spring Peak Project, Nevada



LARGE PROJECT PORTFOLIO

Aggressively exploring large portfolio of 100% - owned and partner-funded projects

QUALITY JURISDICTION

High-grade gold and silver exploration in the mining-friendly Nevada, Idaho and Oregon

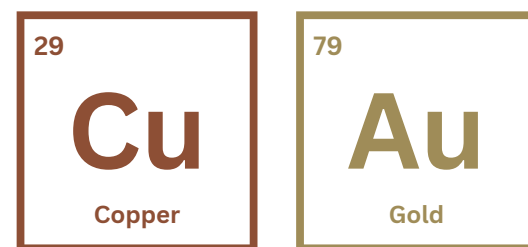
STRATEGIC PARTNERSHIP WITH NEWMONT

Earn-in projects with Newmont which owns 9.9% of the Headwater

EXPERIENCED TEAM WITH LOCAL PRESENCE

Strong capital market expertise combined with a diverse, highly experienced Western US technical team





EXPLORING NORTH AMERICA'S PREMIER COPPER DISTRICTS

KEY PEOPLE:

Wendell Zerb - Chairman & CEO

Caleb Stroup - US Technical Lead & Director

Dr. Craig Hart - Chief Geoscientist

Alistair Waddell - Director

Lauren Roberts - Director

Dr. Alan Wilson - Technical Advisor

Yale Simpson - Corporate Advisor



Kendal Project, British Columbia



EXPOSURE TO CRITICAL METALS EXPLORATION

Multiple 100% owned Copper projects

EXPERIENCED TEAM

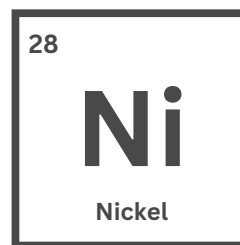
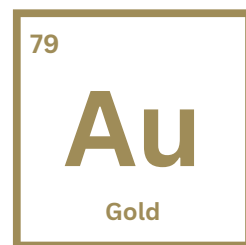
Technically driven team of geoscientists with extensive capital markets experience

QUALITY JURISDICTIONS

Exploring North-America's top Copper districts:

- **British Columbia** - Premier Copper-Gold district with active large-scale mining operations
- **Western United States** - Multiple Copper jurisdictions with world-class operating mines





EXPLORING THE UNDEREXPLORED FINLAND

KEY PEOPLE:

Tero Kosonen - Chairman

Dr. Petri Peltonen - Chief Geologist

Alistair Waddell - Director

Jeffrey R. Wilson - Director

Ernest Mast - Director

Jukka Jokela - Senior Advisor

Dr. Pasi Eilu - Senior Advisor

Phil Smerchanski - Senior Advisor



Ruoppa Project, Kittilä



EXPLORING FOR GIANT GOLD & NICKEL DEPOSITS

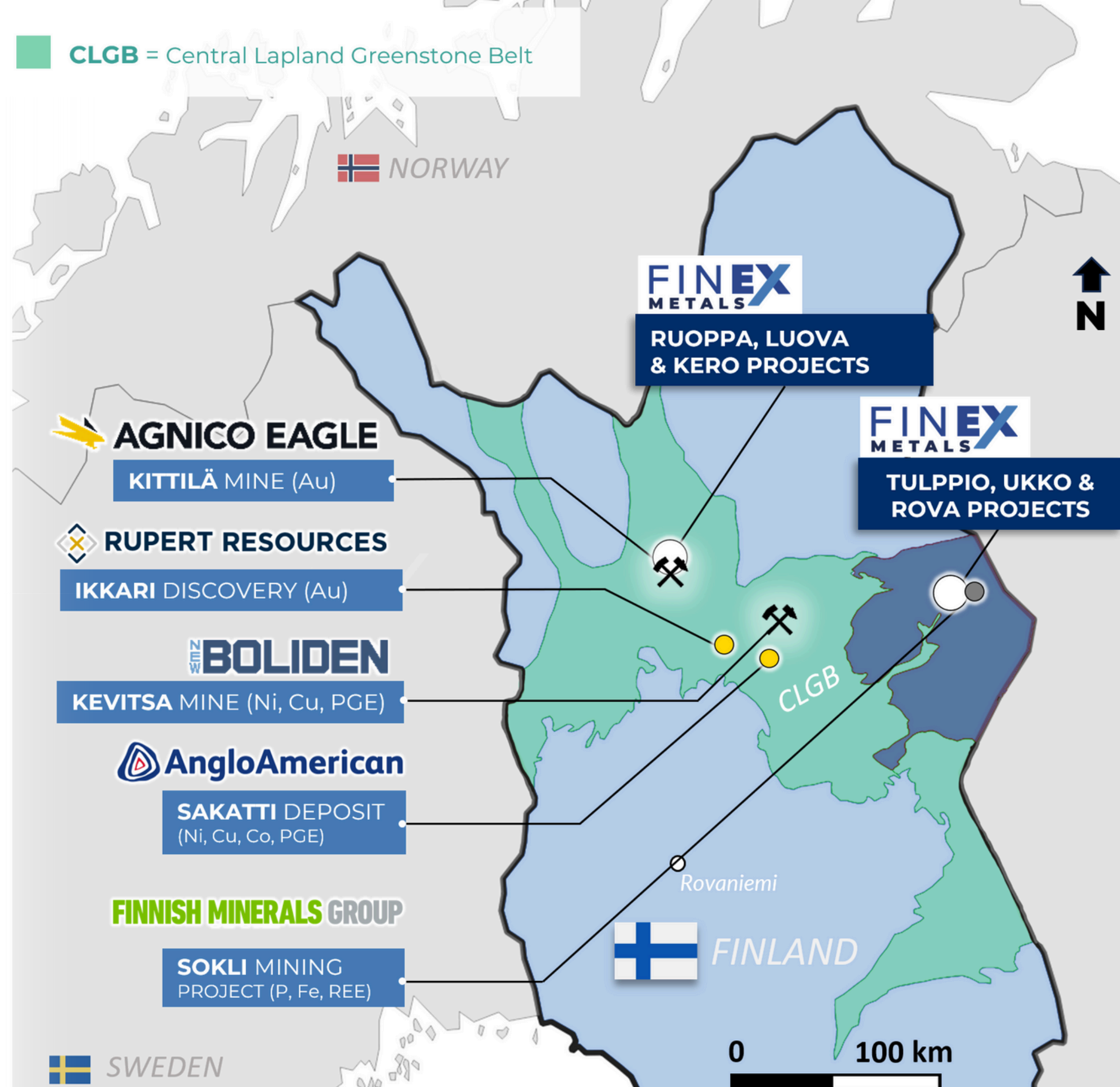
Focused on exploration and discovery of gold and nickel in mining-friendly Northern Finland

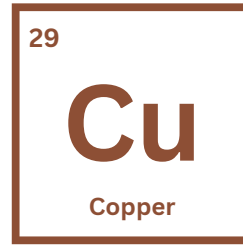
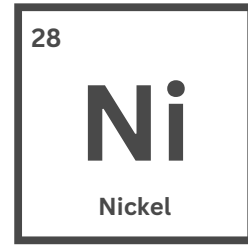
PORTFOLIO OF 100% OWNED PROJECTS

- **Central Lapland Greenstone Belt** - Hosts largest primary gold producer in Europe: Kittilä Mine by Agnico Eagle and Ikkari discovery by Rupert Resources
- **Eastern Lapland Greenstone Belt** - Underexplored district prospective for nickel sulphides and gold

EXPERIENCED TEAM WITH LOCAL KNOWLEDGE

Technically-driven Finnish-Canadian team of geoscientists





EXPLORING FOR TIER-1 NICKEL SULPHIDE DEPOSITS IN MANITOBA

KEY PEOPLE:

Phil Smerchanski - President & CEO

Mark Bennett - Director

Wendell Zerb - Director

Alistair Waddell - Director

Sandra Wong - CFO

Sarah Weber - Advisor



CONDUIT NICKEL

HIGH-GRADE NICKEL EXPLORATION

Focused on exploration and discovery of nickel sulphide deposits in Manitoba

THOMPSON NICKEL BELT

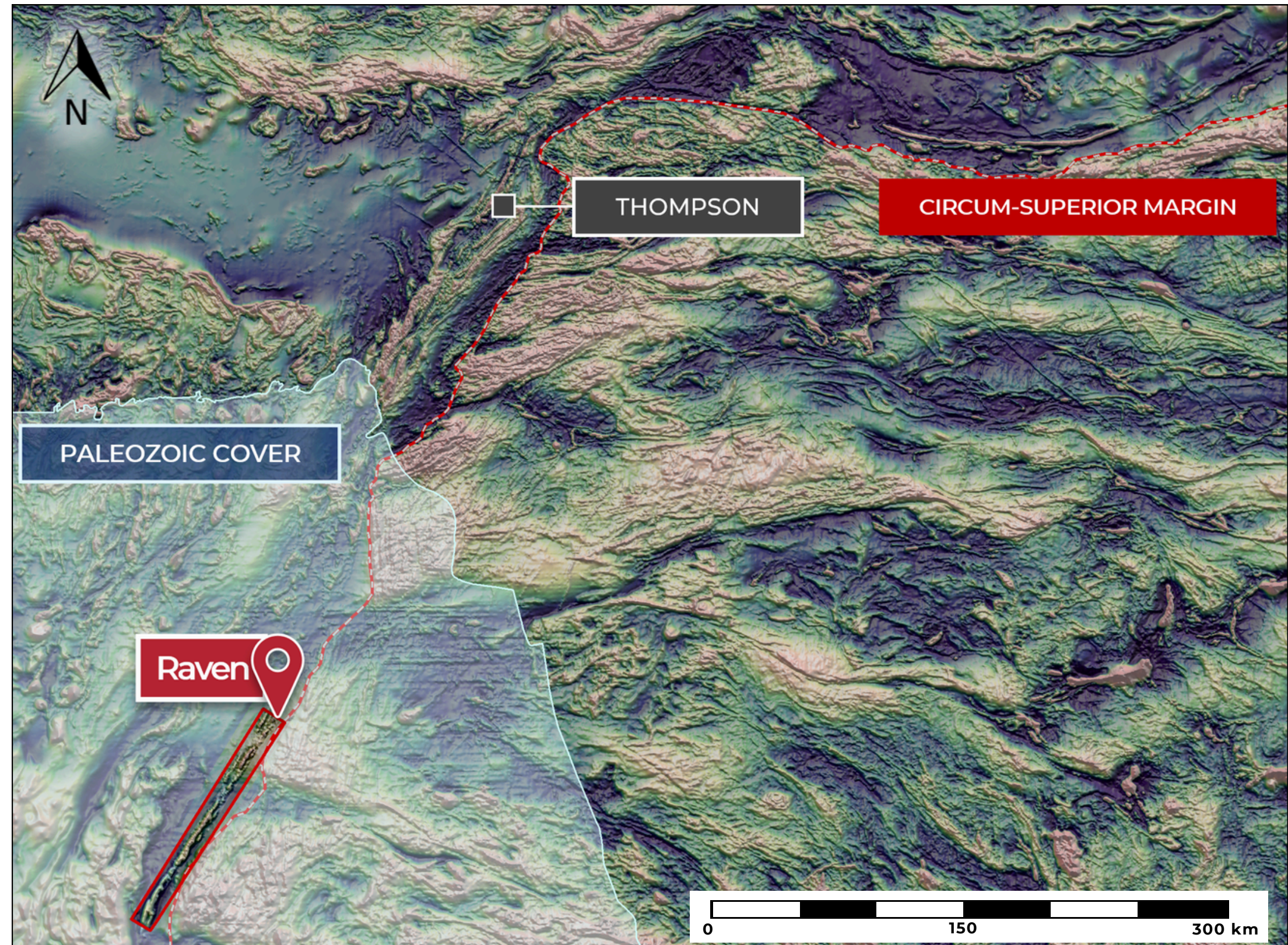
Targeting high-grade deposits in the southwest covered extension of the Thompson Nickel Belt

PROJECTS 100% OWNED

Large, district-scale land position with no underlying royalties

EXPERIENCED TEAM

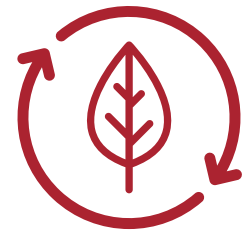
Technically-driven team of geoscientists and extensive capital markets experience



STRONG COMMITMENT TO ESG



NewQuest's ESG objective is to deliver long-term stakeholder value through safe, low-cost mineral exploration in an environmentally and socially responsible manner.



ENVIRONMENT

Continually Identify, analyze, and manage environmental risks

Adhere to all regulatory requirements while minimizing environmental impact

Ensure responsible use of resources



SOCIAL

Work openly and transparently with all stakeholders

Always act in a socially responsible and respectful manner

Actively creating positive impact to the communities in which we operate



GOVERNANCE

Constant communication with our stakeholders through clear, comprehensive disclosure

Strictly adhere to all laws and government regulations while maintaining a safe and healthy work environment

WHY NEWQUEST?



Exploring for early-stage, large-scale targets with potential for Tier-one discovery and massive financial reward

TECHNICAL STRENGTH

Strong in-house technical team combined with a global network of geoscientists gives the Company the ability to identify high-quality and undervalued assets.

The NewQuest team has a successful history of identifying, acquiring and developing mineral exploration projects globally.

CAPITAL MARKET EXPERTISE

Extensive global network of contacts in the capital markets provides access to capital throughout the investment cycle.

The Company and its principals make selected investments into attractive, yet undervalued exploration companies.

PARTNERSHIPS WITH MAJORS

Strong background with major mining companies provides an understanding from the potential acquirers' perspective.

NewQuest companies currently have two multi-year exploration agreements with Newmont and AngloGold Ashanti.

OPERATIONAL EFFICIENCY

The Company moves fast and efficiently to identify and acquire the best available opportunities.

Strong back-office support with extensive experience in managing private and public companies.

The Company is financially disciplined and operates with a low G&A cost base.

NEWQUEST CAPITAL

CONTACT

Alistair Waddell

Alistair@nqcapitalgroup.com

+1-604-992-3814

Caleb Stroup

Caleb@nqcapitalgroup.com

+1-507-313-1480



@NQCAPITAL

NQCapitalGroup.com

1210 - 1130 West Pender Street,
Vancouver, BC V6E 4A4 Canada