

# NEWQUEST CAPITAL

---

CREATING VALUE THROUGH DISCOVERY

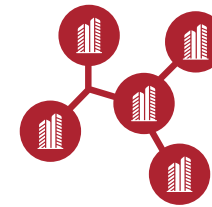


An entrepreneurial, discovery-driven investment group that incubates and finances early-stage mineral exploration projects globally.

**NEWQUEST**  
CAPITAL



NewQuest utilizes cutting edge geoscience to generate large-scale exploration targets with potential for Tier-one discovery.



NewQuest has a portfolio of companies operating in mining-friendly jurisdictions, two of which have exploration agreements with Newmont and AngloGold Ashanti.



NewQuest makes investments in select, undervalued exploration companies with quality management.

# LEADERSHIP TEAM



**Alistair Waddell**  
BSc (Hons.), MAusIMM

Geologist with over 30 years of progressive and diverse global experience.

President & CEO of Inflection Resources and Co-Founder & Chairman of Headwater Gold.

Previously VP Greenfields Exploration for Kinross & CEO of GoldQuest Mining.



**Wendell Zerb**  
BSc, P. Geol

Geologist with over 30 years of experience in capital markets, mining and mineral exploration/development.

Chairman & CEO of Red Canyon Resources. Chairman Inflection Resources.

Previous senior roles with Canaccord & PI Financial. Former President & CEO of Exeter Resource Corp.



**Caleb Stroup**  
BSc & MSc - Geology

Geologist with over 20 years of experience.

President, CEO & Co-Founder of Headwater Gold.

Former Senior Geologist for Kinross Gold and previously with NovaGold and Tintina Resources.



**Tero Kosonen**  
MSc - Economics

Co-Founder of a private equity/venture capital group.

Chairman for FinEx Metals & Director of Headwater Gold and Inflection Resources.

Over 25 years of experience in management roles, entrepreneurial ventures & investments in natural resources.



**Sandra Wong**  
CPA, CGA

Over 25 years of experience in the mining sector. Extensive experience in accounting, corporate secretarial & administrative services.



**Brennan Zerb**  
BBA

Sales, investor relations and marketing background. Experience working with junior mining companies. Currently manages IR for Headwater Gold, Inflection Resources and Red Canyon Resources.



**Dr. Greg Dering**  
PhD - Geology

Geologist with exploration in the western US and Alaska. Previous experience with Barrick and Nevada Bureau of Mines.

VP Exploration at Headwater Gold



# 2024 EXPLORATION METRICS

2024 was a groundbreaking year for NewQuest Capital's portfolio of companies

Greenfields drilling completed on 17, 100% owned projects in the USA, Australia, Canada and Finland

28,043

Metres of greenfields drilling

64

Holes drilled

17

Greenfields projects drilled

8

Drill rigs

2

Partnerships with majors

# GLOBAL ALLIANCE OF EXPLORATION COMPANIES

**CONDUIT**  
NICKEL



ConduitNickel.com

**FINEX**  
METALS

Public listing H1 2025



FinExMetals.net

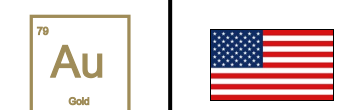
**REDCANYON**  
RESOURCES

CSE: REDC | OTCQB: REDRF



RedCanyonResources.com

**Undercover**  
GOLD



**HEADWATER**  
GOLD INC.

CSE: HWG | OTCQB: HWAUF



HeadwaterGold.com

**INFLECTION**  
RESOURCES

CSE: AUCU | OTCQB: AUCUF | FSE: 5VJ



InflectionResources.com



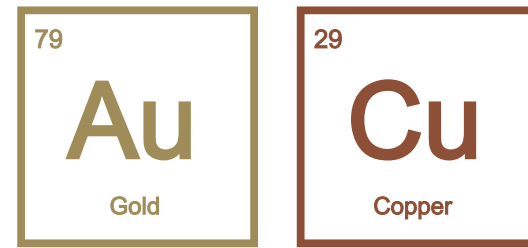
**NEWQUEST**  
CAPITAL

WWW.NQCAPITALGROUP.COM

Earn-in agreements with Newmont

Earn-in agreement with AngloGold Ashanti





## EXPLORING FOR WORLD-CLASS COPPER-GOLD DEPOSITS IN AUSTRALIA

---

### KEY PEOPLE:

**Wendell Zerb** - Chairman

**Alistair Waddell** - President, CEO & Director

**Doug Menzies** - VP Exploration

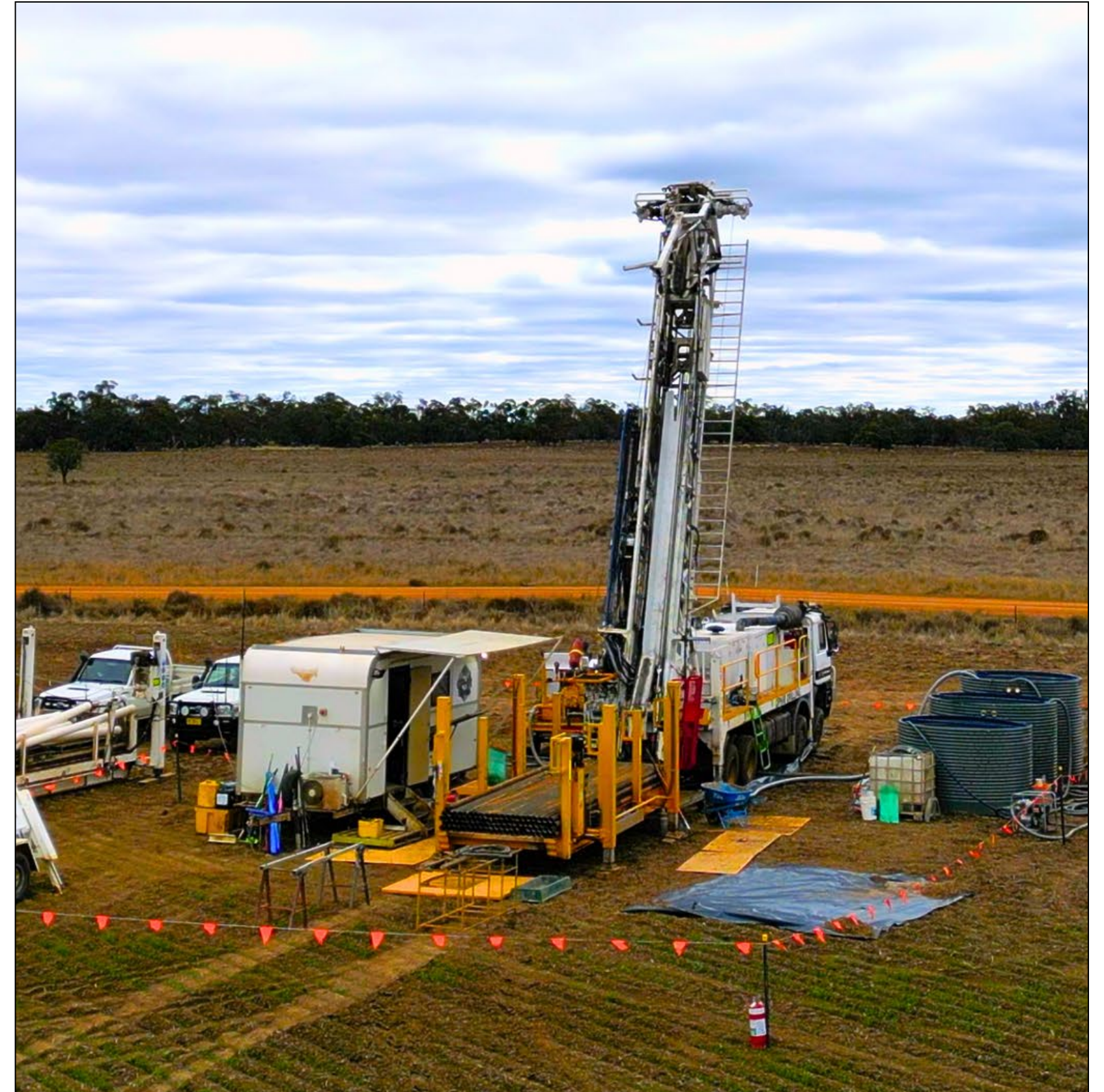
**Fraser MacCorquodale** - Director

**Dr. Stuart Smith** - Director

**Dr. Neil Adshead** - Advisor

**Dr. Douglas Haynes** - Technical Advisor

**Dr. Alan Wilson** - Technical Advisor



Duck Creek Project, New South Wales





## EXPLORING FOR GIANT COPPER-GOLD DEPOSITS

Drilling large, undercover porphyry copper-gold targets in the northern, covered extension of Macquarie Arc

## 100% PROJECT OWNERSHIP

District-scale land position (>7,000 km<sup>2</sup>)

## ANGLOGOLD ASHANTI EXPLORATION AGREEMENT

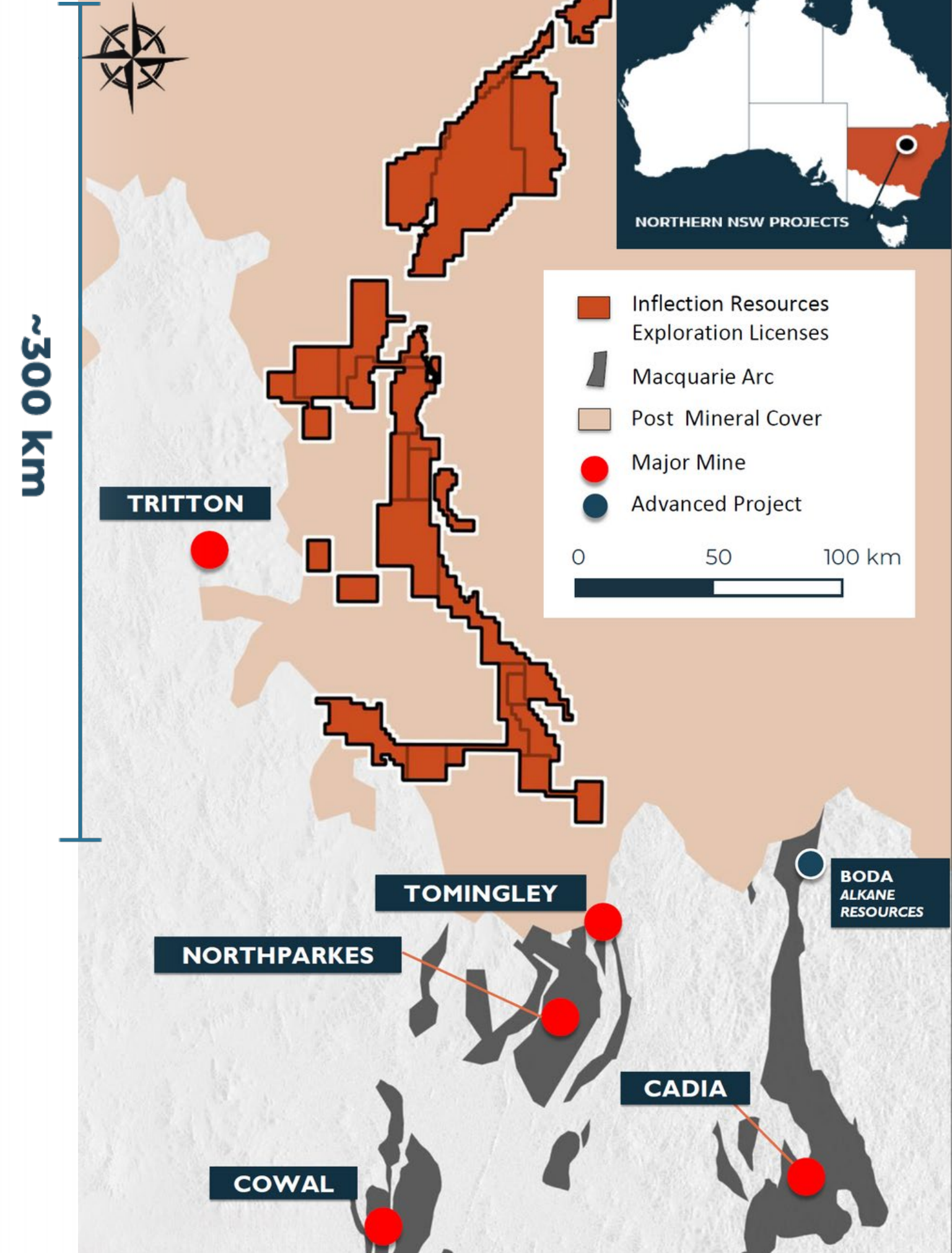
Exploration alliance to explore for Tier-I scale copper-gold deposits

## INNOVATIVE AND DISAPLINED EXPLORATION STRATEGY

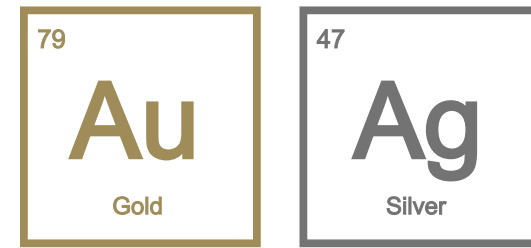
Exploring large, previously un-drilled targets undercover

## PREMIER MINING JURISDICTION

Exploring mining-friendly New South Wales, Australia







## EXPLORING FOR HIGH-GRADE GOLD IN THE WESTERN USA

---

### KEY PEOPLE:

**Alistair Waddell** - Chairman

**Caleb Stroup** - President & CEO

**Randy Vance** - Chief Geologist

**Dr. Greg Dering** - VP Exploration

**Sandra Wong** - CFO

**Fraser MacCorquodale** - Director

**Graeme Currie** - Director

**Brent Cook** - Technical Advisor



Spring Peak Project, Nevada





### LARGE PROJECT PORTFOLIO

Aggressively exploring large portfolio of 100% - owned and partner-funded projects

### QUALITY JURISDICTION

High-grade gold and silver exploration in the mining-friendly Nevada, Idaho and Oregon

### STRATEGIC PARTNERSHIPS

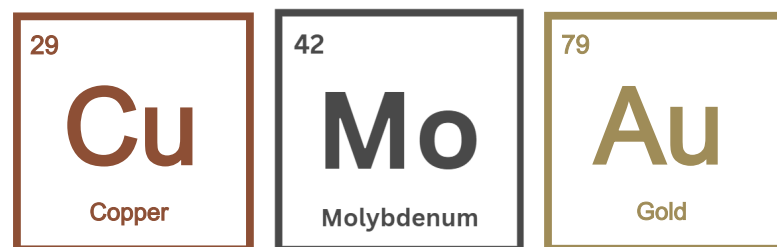
- ✓ Earn-in projects with Newmont which owns 8.7% of the Headwater.
- ✓ 9.9% strategic investment from Centerra Gold

### EXPERIENCED TEAM WITH LOCAL PRESENCE

Strong capital market expertise combined with a diverse, highly experienced Western US technical team







## EXPLORING NORTH AMERICA'S PREMIER COPPER DISTRICTS

---

### KEY PEOPLE:

**Wendell Zerb** - Chairman & CEO

**Caleb Stroup** - US Technical Lead & Director

**Dr. Craig Hart** - Chief Geoscientist

**Alistair Waddell** - Director

**Lauren Roberts** - Director

**Dr. Alan Wilson** - Technical Advisor

**Dr. Dan Core** - Technical Advisor



Kendal Project, British Columbia





## EXPOSURE TO IMPACTFUL CRITICAL METAL DISCOVERY

**New** Copper – Moly discovery at Kendal project

- ✓ Porphyry comparatives suggest strong potential for high grade core
- ✓ High margin potential given exceptional Infrastructure
- ✓ 100% owned, no underlying royalties
- ✓ Rare for small cap company – unrealized market opportunity

## EXPERIENCED TEAM

Technically driven team of geoscientists with extensive capital markets experience

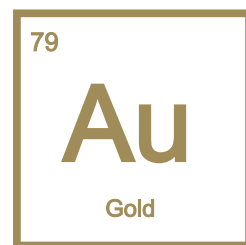
## QUALITY JURISDICTIONS

EXPLORING NORTH-AMERICA'S TOP COPPER DISTRICTS:

- **British Columbia** - Premier Copper-Gold-Moly district with active large-scale mining operations
- **Western United States** - Multiple Copper jurisdictions with world-class operating mines







## EXPLORING THE UNDEREXPLORED FINLAND

---

### KEY PEOPLE:

**Tero Kosonen** – Chairman & CEO

**Dr. Petri Peltonen** - Chief Geologist

**Alistair Waddell** - Director

**Jeffrey R. Wilson** - Director

**Ernest Mast** - Director

**Jukka Jokela** - Senior Advisor

**Dr. Pasi Eilu** - Senior Advisor

**Phil Smerchanski** - Senior Advisor



Ruoppa Project, Kittilä





## EXPLORING FOR HIGH-GRADE GOLD DEPOSITS

Focused on exploration and discovery of gold in mining-friendly Northern Finland

## PORTFOLIO OF 100% OWNED PROJECTS

- **Central Lapland Greenstone Belt**

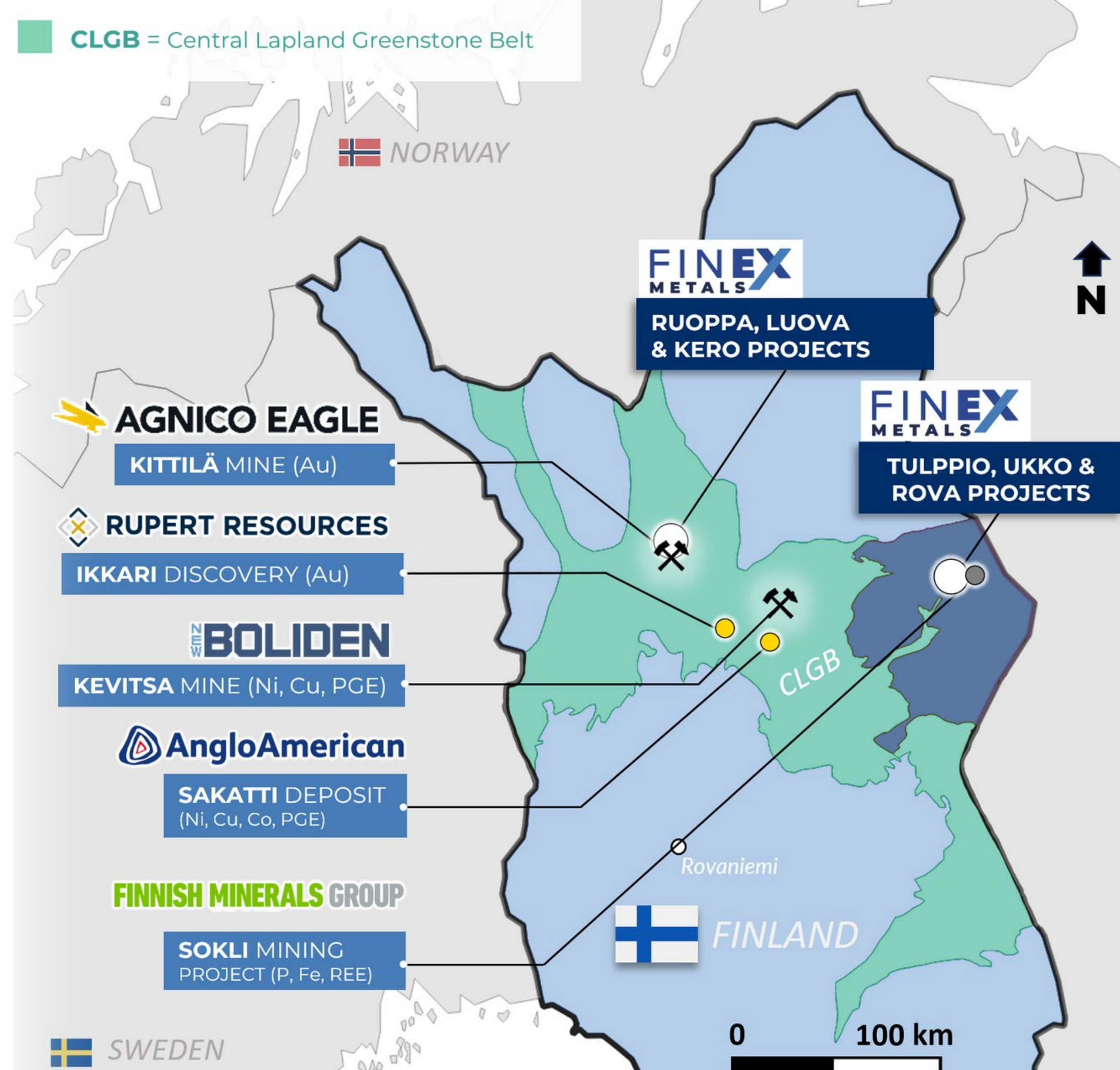
Hosts largest primary gold producer in Europe: Kittilä Mine by Agnico Eagle and Ikkari project discovery by Rupert Resources

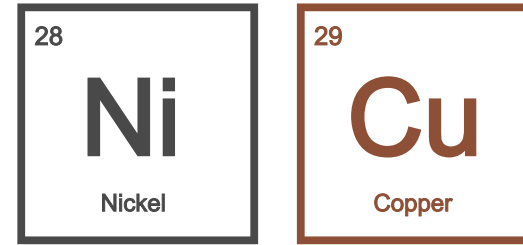
- **Eastern Lapland Greenstone Belt**

Underexplored district prospective for nickel sulphides and gold

## EXPERIENCED TEAM WITH LOCAL KNOWLEDGE

Technically-driven Finnish-Canadian team of geoscientists





## EXPLORING FOR TIER-1 NICKEL SULPHIDE DEPOSITS IN MANITOBA

### KEY PEOPLE:

**Phil Smerchanski** - President & CEO

**Dr. Mark Bennett** - Director

**Wendell Zerb** - Director

**Alistair Waddell** - Director

**Sandra Wong** - CFO

**Sarah Weber** - Advisor





# CONDUIT NICKEL

## HIGH-GRADE NICKEL EXPLORATION

Focused on exploration and discovery of nickel sulphide deposits in Manitoba

## THOMPSON NICKEL BELT

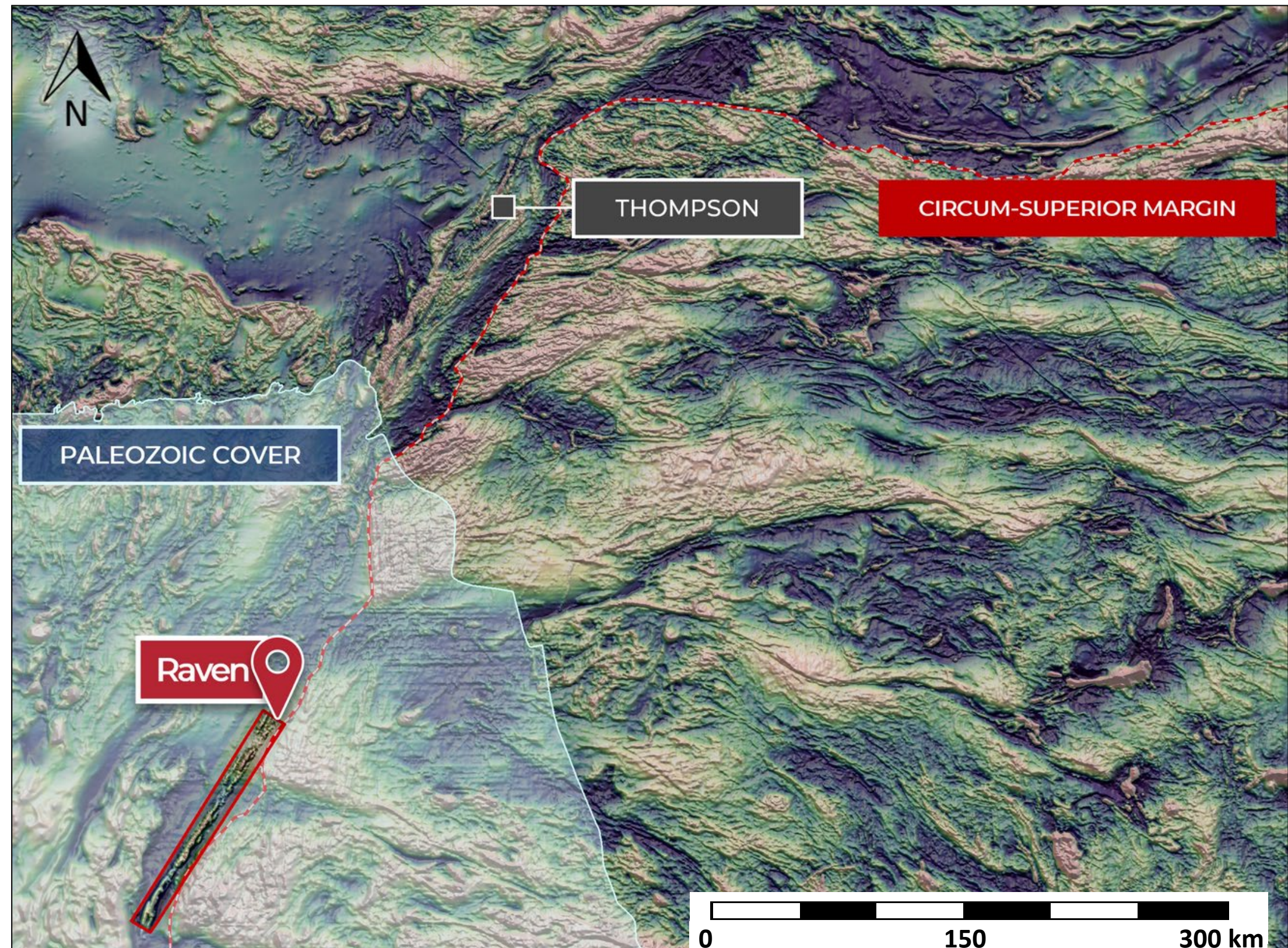
Targeting high-grade deposits in the southwest covered extension of the Thompson Nickel Belt

## PROJECTS 100% OWNED

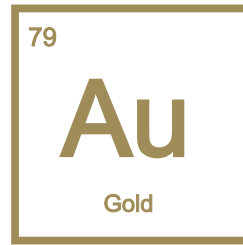
Large, district-scale land position with no underlying royalties

## EXPERIENCED TEAM

Technically-driven team of geoscientists and extensive capital markets experience







## STRATEGIC CONSOLIDATION CORTEZ TREND, NEVADA

### WORLD-CLASS DEPOSITS & MINERAL ENDOWMENT

Cortez is one of the largest gold-producing districts in the world with multiple active mines and several new discoveries

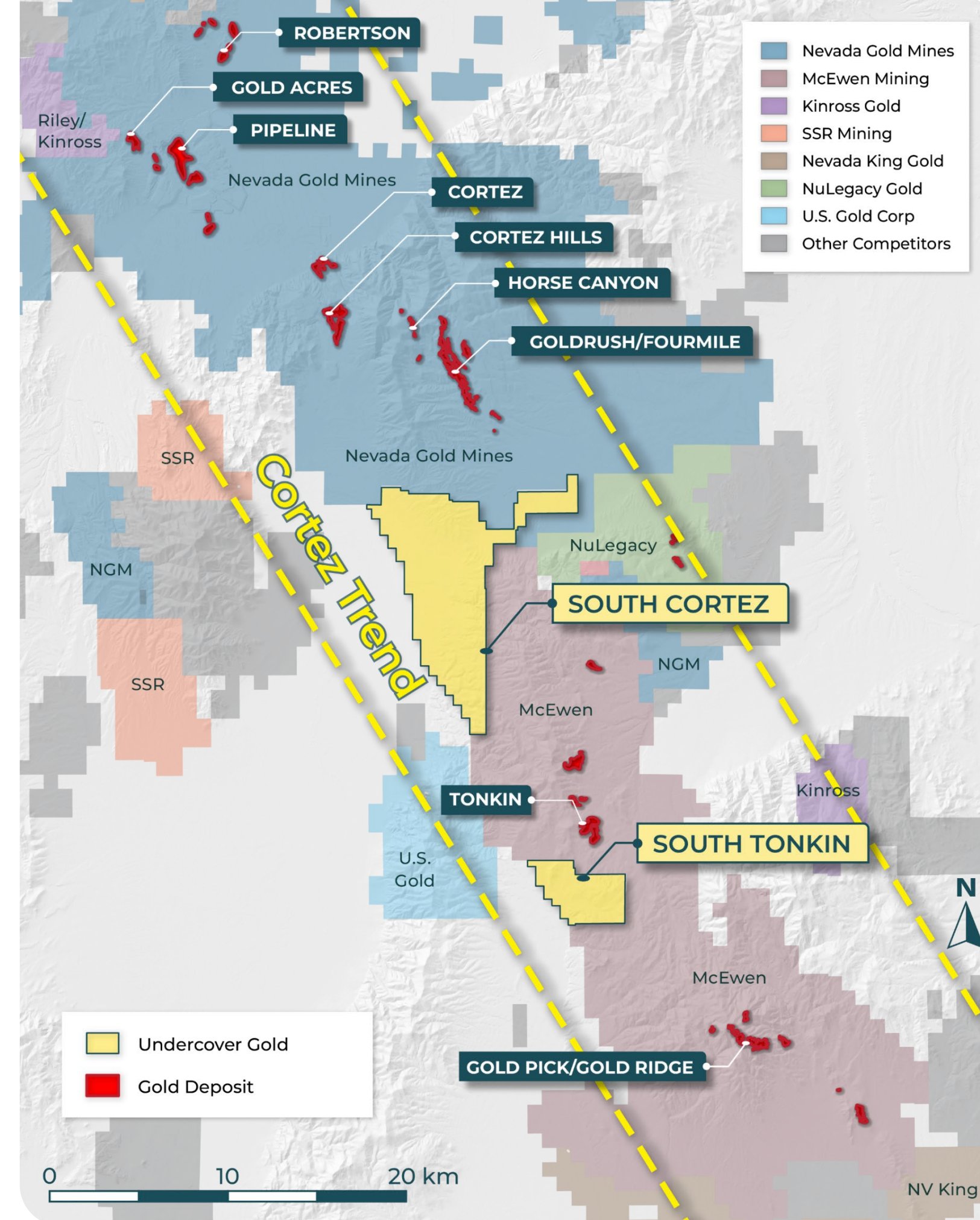
- >50M ounces of gold endowment | Multiple >10M ounce gold deposits

### MASSIVE 100% OWNED LAND POSITION

Largest land package on the Cortez Trend not owned by Nevada Gold Mines or McEwen Mining

Historically fragmented land position has never been consolidated until now

Underexplored with significant upside for tier-one gold discovery





*“At NewQuest Capital we believe that there are large-scale undiscovered and underexplored greenfield opportunities globally with significant potential for major discoveries.”*



## Our Guiding Principles:

- ✓ Early-stage greenfields exploration in mining-friendly jurisdictions
- ✓ Focused on discovery of Tier-1 scale deposits
- ✓ Seeks partnerships with major mining companies
- ✓ Technically driven team utilizing innovative geoscience
- ✓ 100% owned district scale land positions
- ✓ Disciplined Capital Management
- ✓ Global focus with strong local presence



# WHY NEWQUEST?



Exploring for early-stage, large-scale targets with potential for Tier-one discovery

## TECHNICAL STRENGTH

Strong in-house technical team combined with a global network of geoscientists gives the Company the ability to identify high-quality and undervalued assets.

The NewQuest team has a successful history of identifying, acquiring and developing mineral exploration projects globally.

## CAPITAL MARKET EXPERTISE

Extensive global network of contacts in the capital markets provides access to capital throughout the investment cycle.

The Company and its principals make selected investments into attractive, yet undervalued exploration companies.

## PARTNERSHIPS WITH MAJORS

Strong background with major mining companies provides an understanding from the potential acquirers' perspective.

NewQuest companies currently have two multi-year exploration agreements with Newmont and AngloGold Ashanti.

## OPERATIONAL EFFICIENCY

The Company moves fast and efficiently to identify and acquire the best available opportunities.

Strong back-office support with extensive experience in managing private and public companies.

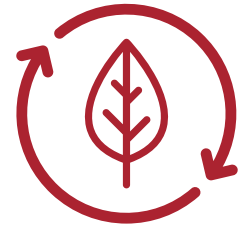
The Company is financially disciplined and operates with a low G&A cost base.



# STRONG COMMITMENT TO ESG



NewQuest's ESG objective is to deliver long-term stakeholder value through safe, low-cost mineral exploration in an environmentally and socially responsible manner.



## ENVIRONMENT

Continually Identify, analyze, and manage environmental risks

Adhere to all regulatory requirements while minimizing environmental impact

Ensure responsible use of resources



## SOCIAL

Work openly and transparently with all stakeholders

Always act in a socially responsible and respectful manner

Actively creating positive impact in the communities in which we operate



## GOVERNANCE

Constant communication with our stakeholders through clear, comprehensive disclosure

Strictly adhere to all laws and government regulations while maintaining a safe and healthy work environment



# NEWQUEST CAPITAL

---

[nqcapitalgroup.com](http://nqcapitalgroup.com)

1210 - 1130 West Pender Street,  
Vancouver, BC V6E 4A4 Canada



[@nqcapital](https://twitter.com/nqcapital)

**Alistair Waddell**  
Alistair@nqcapitalgroup.com  
+1-604-992-3814

**Caleb Stroup**  
Caleb@nqcapitalgroup.com  
+1-507-313-1480