

NEWQUEST CAPITAL

CREATING VALUE THROUGH DISCOVERY

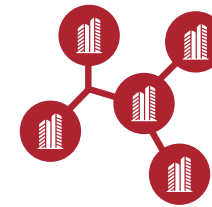


An entrepreneurial, discovery-driven investment group that incubates and finances early-stage mineral exploration projects globally.

NEWQUEST
CAPITAL



NewQuest utilizes cutting edge geoscience to generate large-scale exploration targets with potential for Tier-one discovery.



NewQuest has a portfolio of companies operating in mining-friendly jurisdictions, two of which have exploration agreements with Newmont and AngloGold Ashanti.



NewQuest makes investments in select, undervalued exploration companies with quality management.

LEADERSHIP TEAM



Alistair Waddell
BSc (Hons.), MAusIMM

Geologist with over 30 years of progressive and diverse global experience.

President & CEO of Inflection Resources and Co-Founder & Chairman of Headwater Gold.

Previously VP Greenfields Exploration for Kinross & CEO of GoldQuest Mining.



Wendell Zerb
BSc, P. Geol

Geologist with over 30 years of experience in capital markets, mining and mineral exploration/development.

Chairman & CEO of Red Canyon Resources. Chairman Inflection Resources.

Previous senior roles with Canaccord & PI Financial. Former President & CEO of Exeter Resource Corp.



Caleb Stroup
BSc & MSc - Geology

Geologist with over 20 years of experience.

President, CEO & Co-Founder of Headwater Gold.

Former Senior Geologist for Kinross Gold and previously with NovaGold and Tintina Resources.



Tero Kosonen
MSc - Economics

Co-Founder of a private equity/venture capital group.

Chairman for FinEx Metals & Director of Headwater Gold and Inflection Resources.

Over 25 years of experience in management roles, entrepreneurial ventures & investments in natural resources.



Sandra Wong
CPA, CGA

Over 25 years of experience in the mining sector. Extensive experience in accounting, corporate secretarial & administrative services.



Brennan Zerb
BBA

Sales, investor relations and marketing background. Experience working with junior mining companies. Currently manages IR for Headwater Gold, Inflection Resources and Red Canyon Resources.



Dr. Greg Dering
PhD - Geology

Geologist with exploration in the western US and Alaska. Previous experience with Barrick and Nevada Bureau of Mines.

VP Exploration at Headwater Gold

2024 EXPLORATION METRICS

2024 was a groundbreaking year for NewQuest Capital's portfolio of companies

Greenfields drilling completed on 17, 100% owned projects in the USA, Australia, Canada and Finland

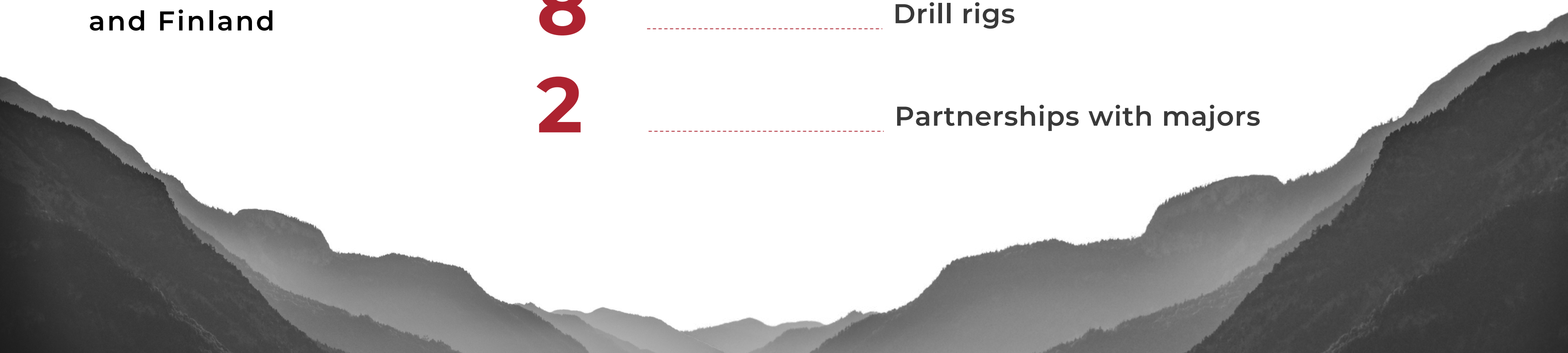
28,043 Metres of greenfields drilling

64 Holes drilled

17 Greenfields projects drilled

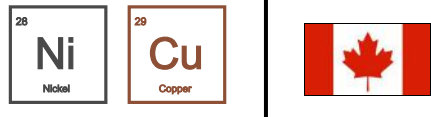
8 Drill rigs

2 Partnerships with majors



GLOBAL ALLIANCE OF EXPLORATION COMPANIES

CONDUIT
NICKEL



ConduitNickel.com

FINEX
METALS

Public listing H1 2025



FinExMetals.net

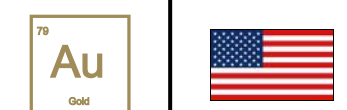
REDCANYON
RESOURCES

CSE: REDC | OTCQB: REDRF



RedCanyonResources.com

Undercover
GOLD



HEADWATER
GOLD INC.

CSE: HWG | OTCQB: HWAUF



HeadwaterGold.com

INFLECTION
RESOURCES

CSE: AUCU | OTCQB: AUCUF | FSE: 5VJ



InflectionResources.com

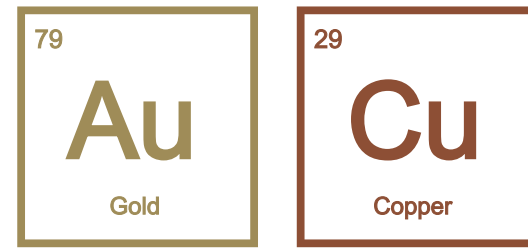


NEWQUEST
CAPITAL

WWW.NQCAPITALGROUP.COM

Earn-in agreements with Newmont

Earn-in agreement with AngloGold Ashanti



EXPLORING FOR WORLD-CLASS COPPER-GOLD DEPOSITS IN AUSTRALIA

KEY PEOPLE:

Wendell Zerb - Chairman

Alistair Waddell - President, CEO & Director

Doug Menzies - VP Exploration

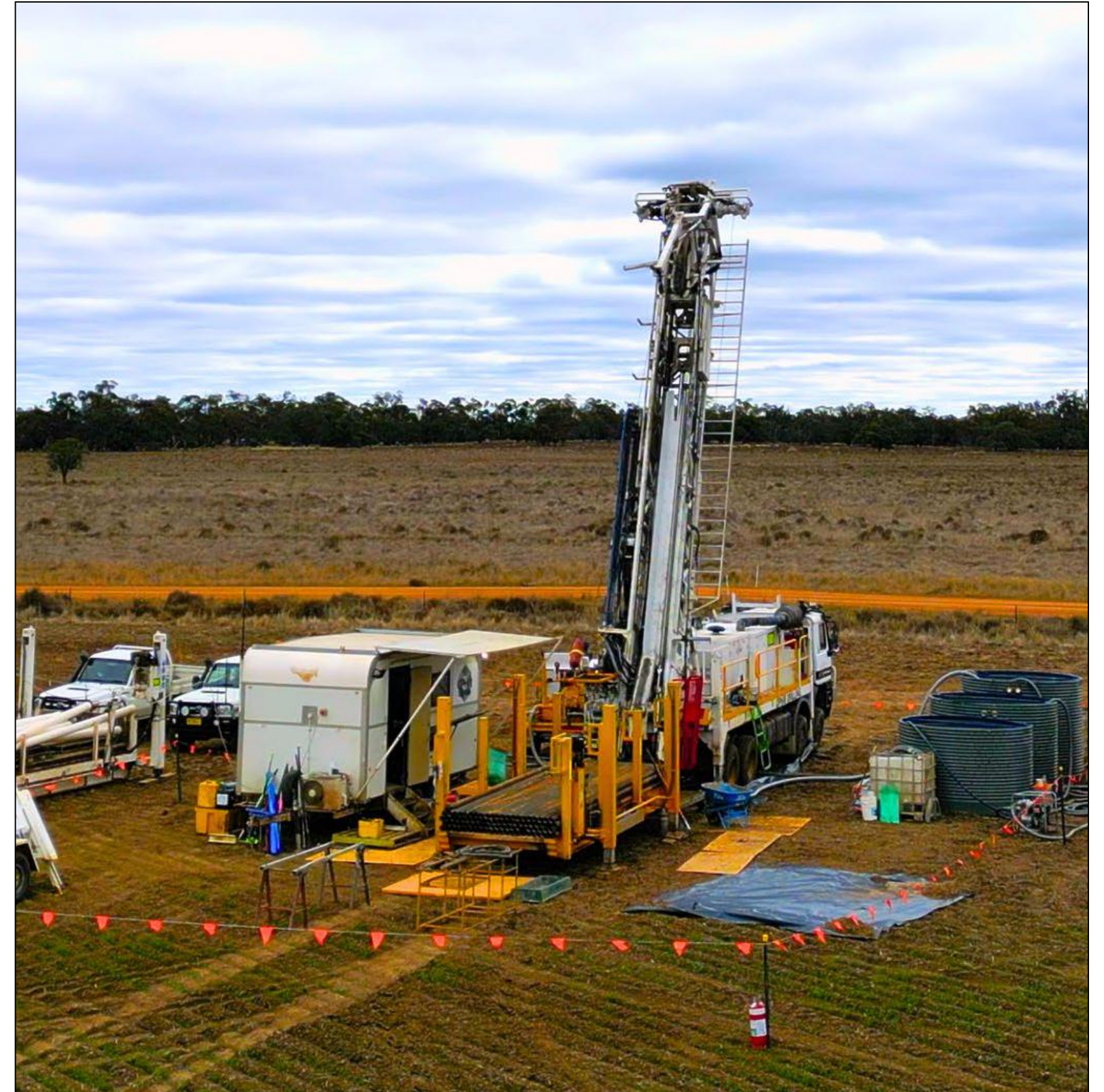
Fraser MacCorquodale - Director

Dr. Stuart Smith - Director

Dr. Neil Adshead - Advisor

Dr. Douglas Haynes - Technical Advisor

Dr. Alan Wilson - Technical Advisor



Duck Creek Project, New South Wales



EXPLORING FOR GIANT COPPER-GOLD DEPOSITS

Drilling large, undercover porphyry copper-gold targets in the northern, covered extension of Macquarie Arc

100% PROJECT OWNERSHIP

District-scale land position

ANGLOGOLD ASHANTI EXPLORATION AGREEMENT

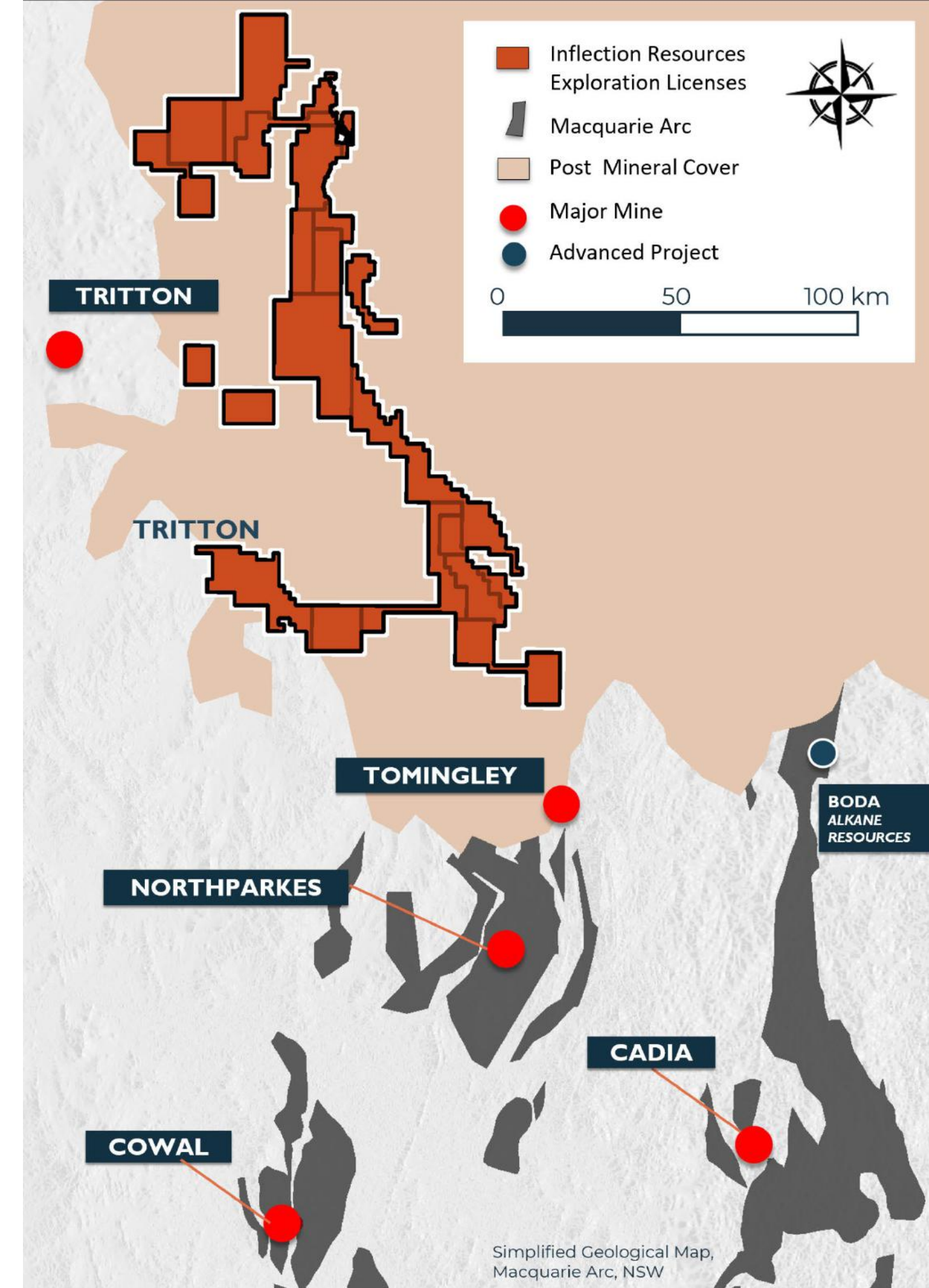
Exploration alliance to explore for Tier-I scale copper-gold deposits

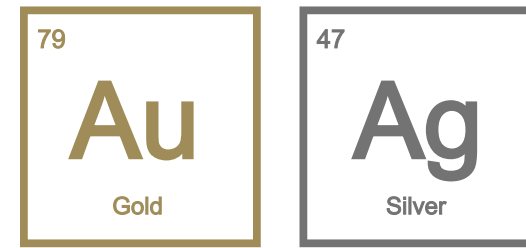
INNOVATIVE AND DISAPLINED EXPLORATION STRATEGY

Exploring large, previously un-drilled targets undercover

PREMIER MINING JURISDICTION

Exploring mining-friendly New South Wales, Australia





EXPLORING FOR HIGH-GRADE GOLD IN THE WESTERN USA

KEY PEOPLE:

Alistair Waddell - Chairman

Caleb Stroup - President & CEO

Randy Vance - Chief Geologist

Dr. Greg Dering - VP Exploration

Sandra Wong - CFO

Fraser MacCorquodale - Director

Graeme Currie - Director

Brent Cook - Technical Advisor



Spring Peak Project, Nevada



LARGE PROJECT PORTFOLIO

Aggressively exploring large portfolio of 100% - owned and partner-funded projects

QUALITY JURISDICTION

High-grade gold and silver exploration in the mining-friendly Nevada, Idaho and Oregon

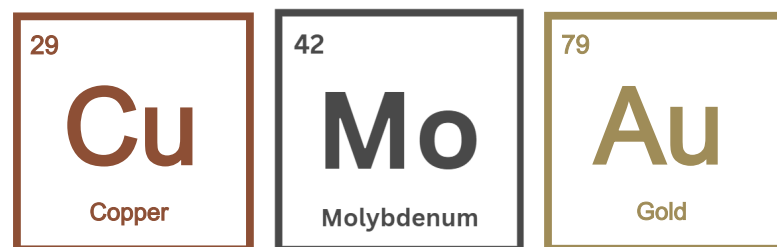
STRATEGIC PARTNERSHIPS

- ✓ Earn-in projects with Newmont which owns 8.7% of the Headwater.
- ✓ 9.9% strategic investment from Centerra Gold

EXPERIENCED TEAM WITH LOCAL PRESENCE

Strong capital market expertise combined with a diverse, highly experienced Western US technical team





EXPLORING NORTH AMERICA'S PREMIER COPPER DISTRICTS

KEY PEOPLE:

Wendell Zerb - Chairman & CEO

Caleb Stroup - US Technical Lead & Director

Dr. Craig Hart - Chief Geoscientist

Alistair Waddell - Director

Lauren Roberts - Director

Dr. Alan Wilson - Technical Advisor

Dr. Dan Core - Technical Advisor



Kendal Project, British Columbia



EXPOSURE TO IMPACTFUL CRITICAL METAL DISCOVERY

New Copper – Moly discovery at Kendal project

- ✓ Porphyry comparatives suggest strong potential for high grade core
- ✓ High margin potential given exceptional Infrastructure
- ✓ 100% owned, no underlying royalties
- ✓ Rare for small cap company – unrealized market opportunity

EXPERIENCED TEAM

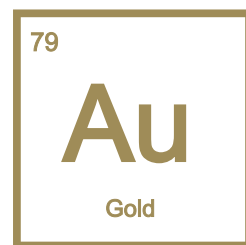
Technically driven team of geoscientists with extensive capital markets experience

QUALITY JURISDICTIONS

EXPLORING NORTH-AMERICA'S TOP COPPER DISTRICTS:

- **British Columbia** - Premier Copper-Gold-Moly district with active large-scale mining operations
- **Western United States** - Multiple Copper jurisdictions with world-class operating mines





EXPLORING THE UNDEREXPLORED FINLAND

KEY PEOPLE:

Tero Kosonen – Chairman & CEO

Dr. Petri Peltonen - Chief Geologist

Alistair Waddell - Director

Jeffrey R. Wilson - Director

Ernest Mast - Director

Jukka Jokela - Senior Advisor

Dr. Pasi Eilu - Senior Advisor

Phil Smerchanski - Senior Advisor



Ruoppa Project, Kittilä



EXPLORING FOR HIGH-GRADE GOLD DEPOSITS

Focused on exploration and discovery of gold in mining-friendly Northern Finland

PORTFOLIO OF 100% OWNED PROJECTS

- **Central Lapland Greenstone Belt**

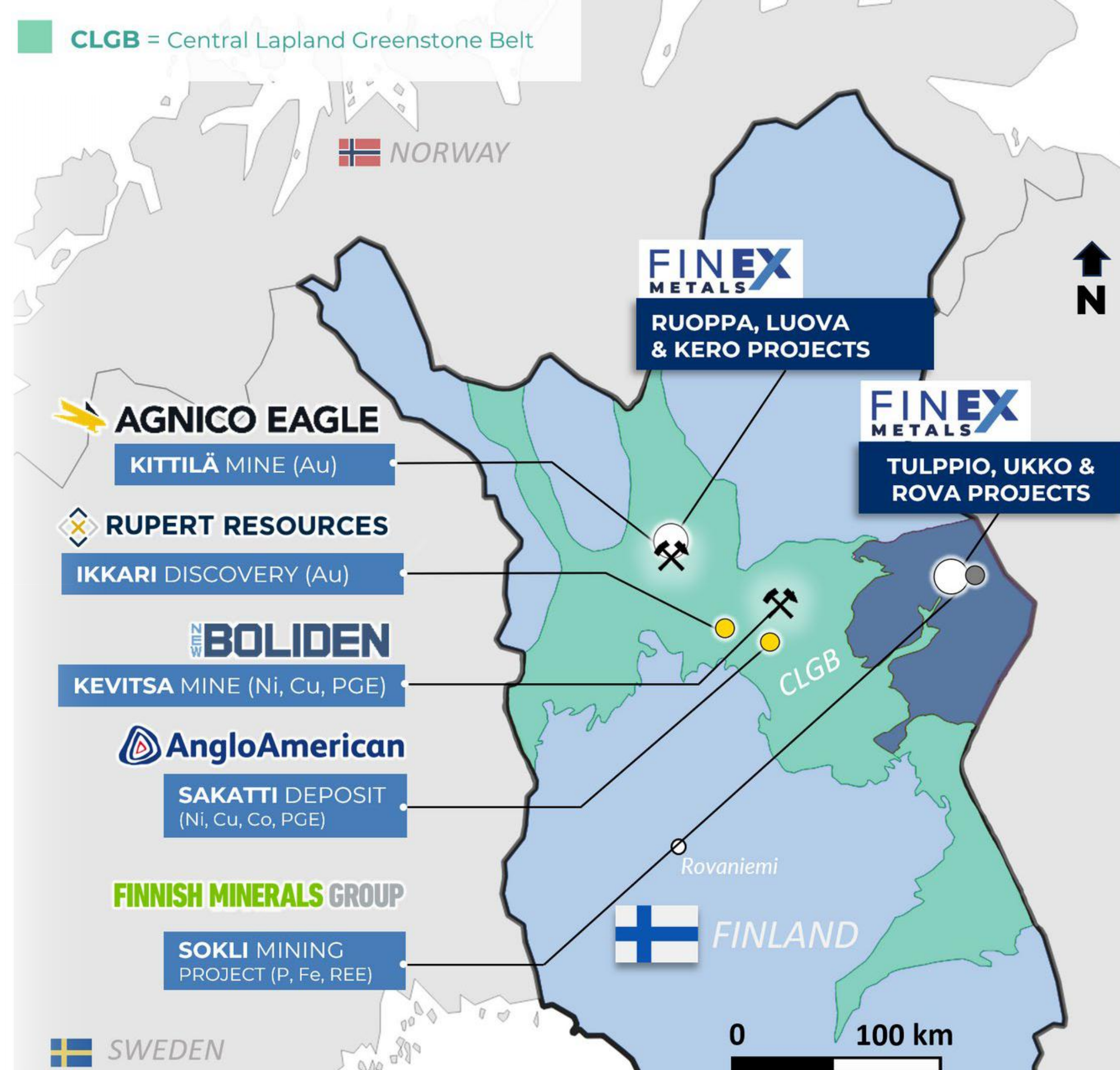
Hosts largest primary gold producer in Europe: Kittilä Mine by Agnico Eagle and Ikkari project discovery by Rupert Resources

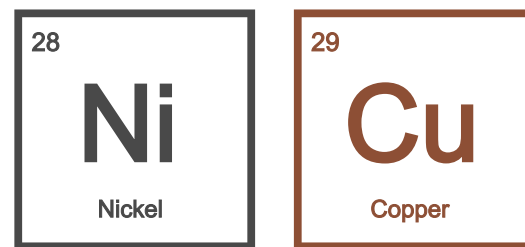
- **Eastern Lapland Greenstone Belt**

Underexplored district prospective for nickel sulphides and gold

EXPERIENCED TEAM WITH LOCAL KNOWLEDGE

Technically-driven Finnish-Canadian team of geoscientists





EXPLORING FOR TIER-1 NICKEL SULPHIDE DEPOSITS IN MANITOBA

KEY PEOPLE:

Phil Smerchanski - President & CEO

Dr. Mark Bennett - Director

Wendell Zerb - Director

Alistair Waddell - Director

Sandra Wong - CFO

Sarah Weber - Advisor



CONDUIT NICKEL

HIGH-GRADE NICKEL EXPLORATION

Focused on exploration and discovery of nickel sulphide deposits in Manitoba

THOMPSON NICKEL BELT

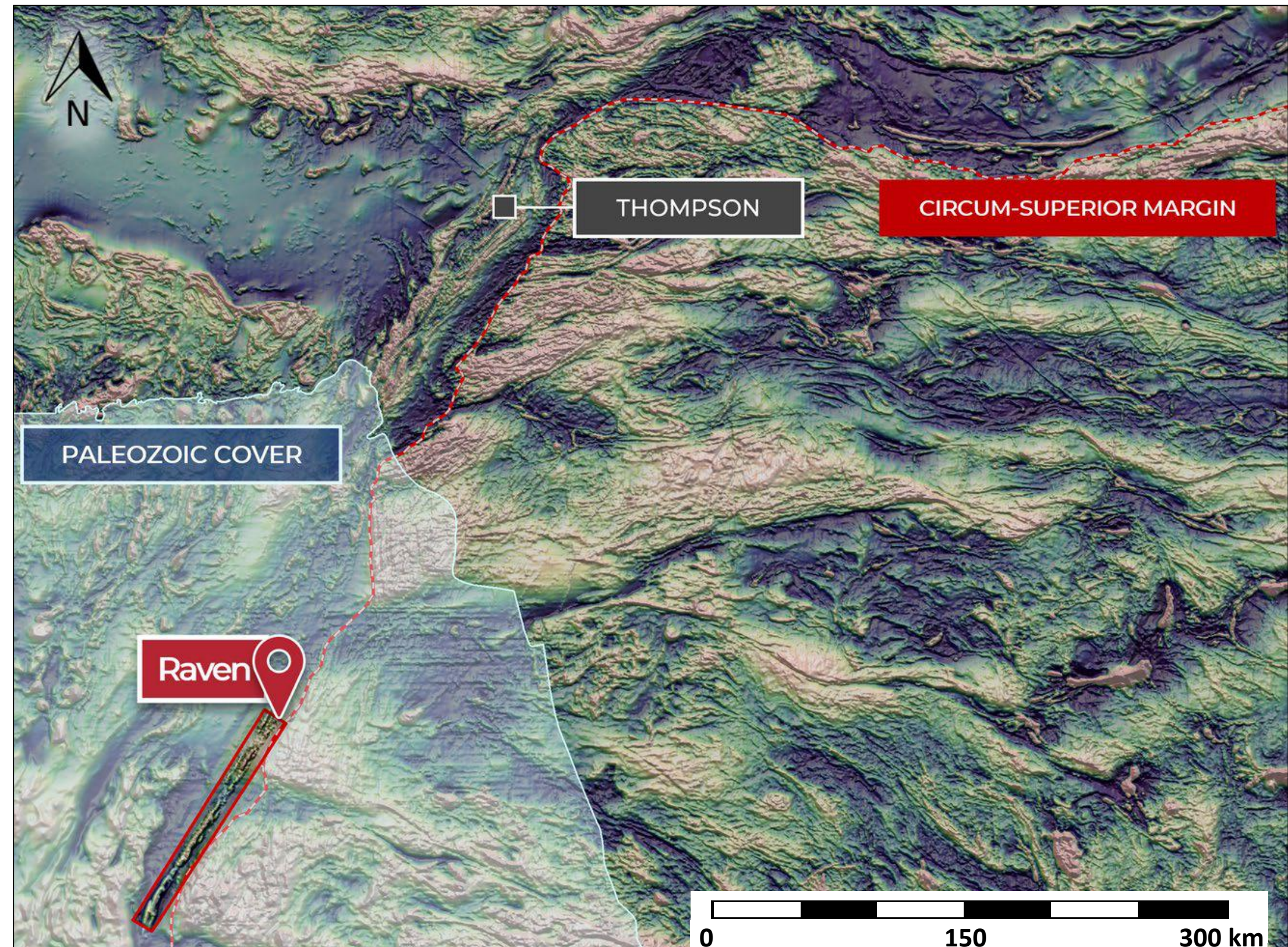
Targeting high-grade deposits in the southwest covered extension of the Thompson Nickel Belt

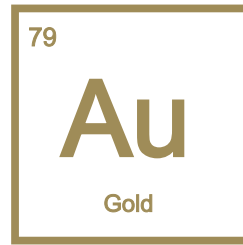
PROJECTS 100% OWNED

Large, district-scale land position with no underlying royalties

EXPERIENCED TEAM

Technically-driven team of geoscientists and extensive capital markets experience





STRATEGIC CONSOLIDATION CORTEZ TREND, NEVADA

WORLD-CLASS DEPOSITS & MINERAL ENDOWMENT

Cortez is one of the largest gold-producing districts in the world with multiple active mines and several new discoveries

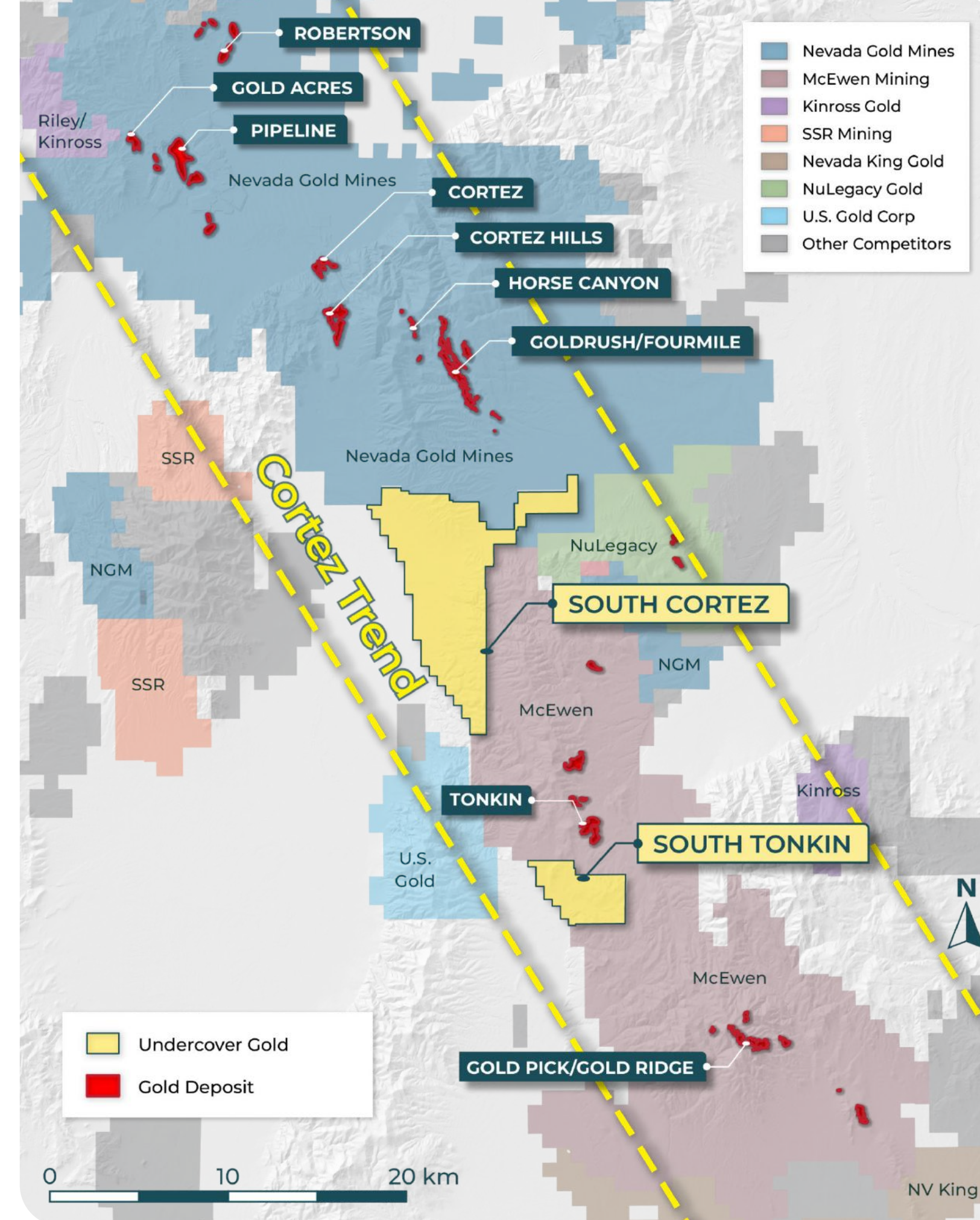
- >50M ounces of gold endowment | Multiple >10M ounce gold deposits

MASSIVE 100% OWNED LAND POSITION

Largest land package on the Cortez Trend not owned by Nevada Gold Mines or McEwen Mining

Historically fragmented land position has never been consolidated until now

Underexplored with significant upside for tier-one gold discovery



“At NewQuest Capital we believe that there are large-scale undiscovered and underexplored greenfield opportunities globally with significant potential for major discoveries.”



Our Guiding Principles:

- ✓ **Early-stage greenfields exploration in mining-friendly jurisdictions**
- ✓ **Technically driven team utilizing innovative geoscience**
- ✓ **Focused on discovery of Tier-1 scale deposits**
- ✓ **100% owned district scale land positions**
- ✓ **Global focus with strong local presence**
- ✓ **Seeks partnerships with major mining companies**
- ✓ **Disciplined Capital Management**

WHY NEWQUEST?



Exploring for early-stage, large-scale targets with potential for Tier-one discovery

TECHNICAL STRENGTH

Strong in-house technical team combined with a global network of geoscientists gives the Company the ability to identify high-quality and undervalued assets.

The NewQuest team has a successful history of identifying, acquiring and developing mineral exploration projects globally.

CAPITAL MARKET EXPERTISE

Extensive global network of contacts in the capital markets provides access to capital throughout the investment cycle.

The Company and its principals make selected investments into attractive, yet undervalued exploration companies.

PARTNERSHIPS WITH MAJORS

Strong background with major mining companies provides an understanding from the potential acquirers' perspective.

NewQuest companies currently have two multi-year exploration agreements with Newmont and AngloGold Ashanti.

OPERATIONAL EFFICIENCY

The Company moves fast and efficiently to identify and acquire the best available opportunities.

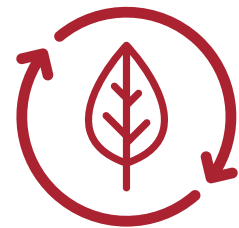
Strong back-office support with extensive experience in managing private and public companies.

The Company is financially disciplined and operates with a low G&A cost base.

STRONG COMMITMENT TO ESG



NewQuest's ESG objective is to deliver long-term stakeholder value through safe, low-cost mineral exploration in an environmentally and socially responsible manner.



ENVIRONMENT

Continually Identify, analyze, and manage environmental risks

Adhere to all regulatory requirements while minimizing environmental impact

Ensure responsible use of resources



SOCIAL

Work openly and transparently with all stakeholders

Always act in a socially responsible and respectful manner

Actively creating positive impact in the communities in which we operate



GOVERNANCE

Constant communication with our stakeholders through clear, comprehensive disclosure

Strictly adhere to all laws and government regulations while maintaining a safe and healthy work environment

NEWQUEST CAPITAL

Alistair Waddell

Alistair@nqcapitalgroup.com

+1-604-992-3814

Caleb Stroup

Caleb@nqcapitalgroup.com

+1-507-313-1480



@NQCAPITAL

NQCapitalGroup.com

1210 - 1130 West Pender Street,
Vancouver, BC V6E 4A4 Canada